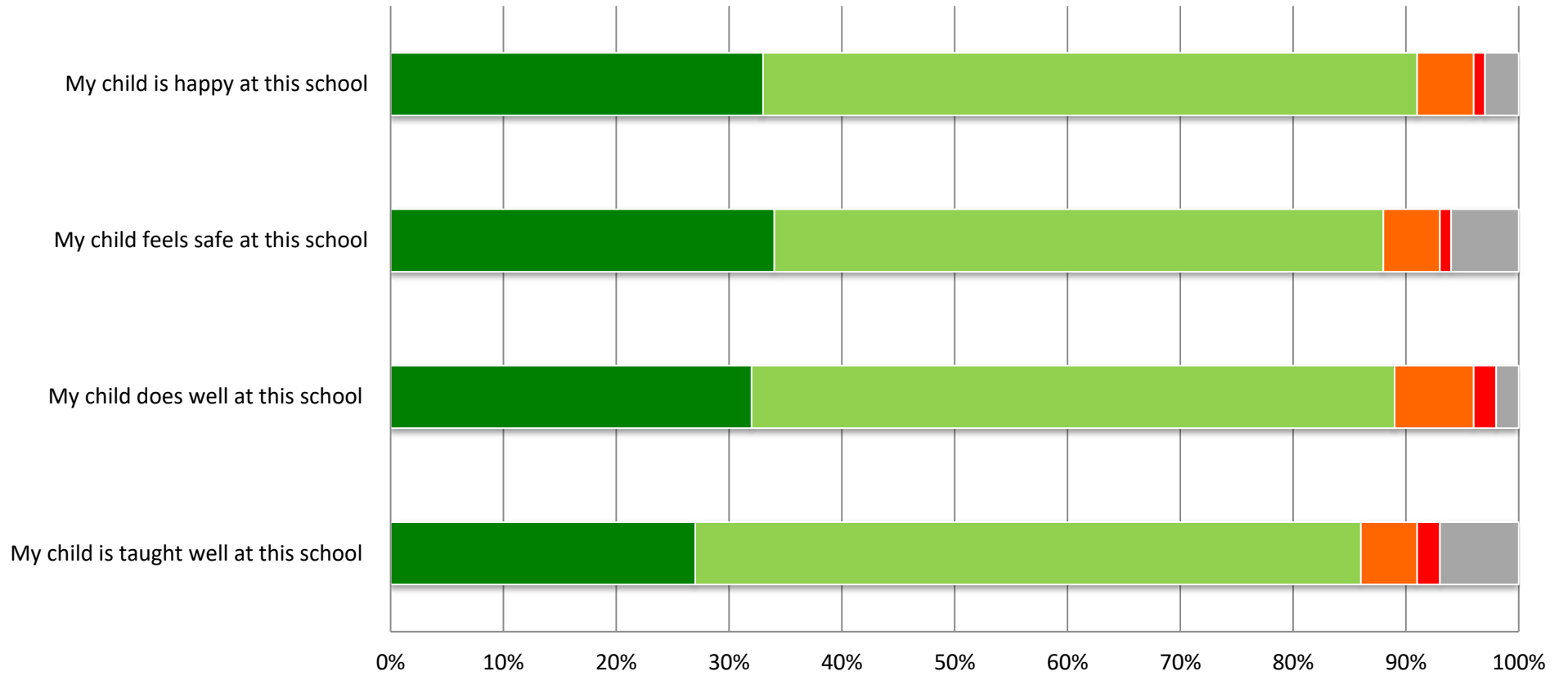


## Parental survey results



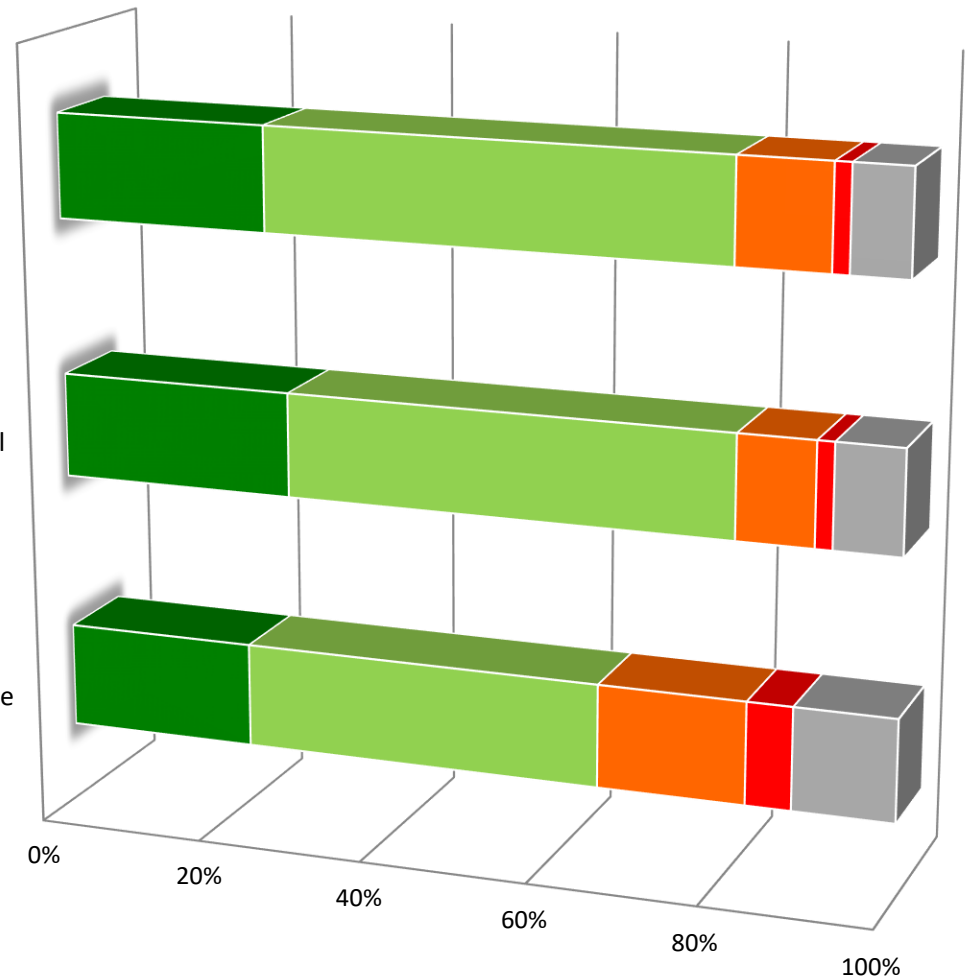
	My child is taught well at this school	My child does well at this school	My child feels safe at this school	My child is happy at this school
Strongly Agree	27	32	34	33
Agree	59	57	54	58
Disagree	5	7	5	5
Strongly Disagree	2	2	1	1
Don't Know	7	2	6	3

## Parental survey results

My child gets appropriate homework/pre-learning tasks in this school

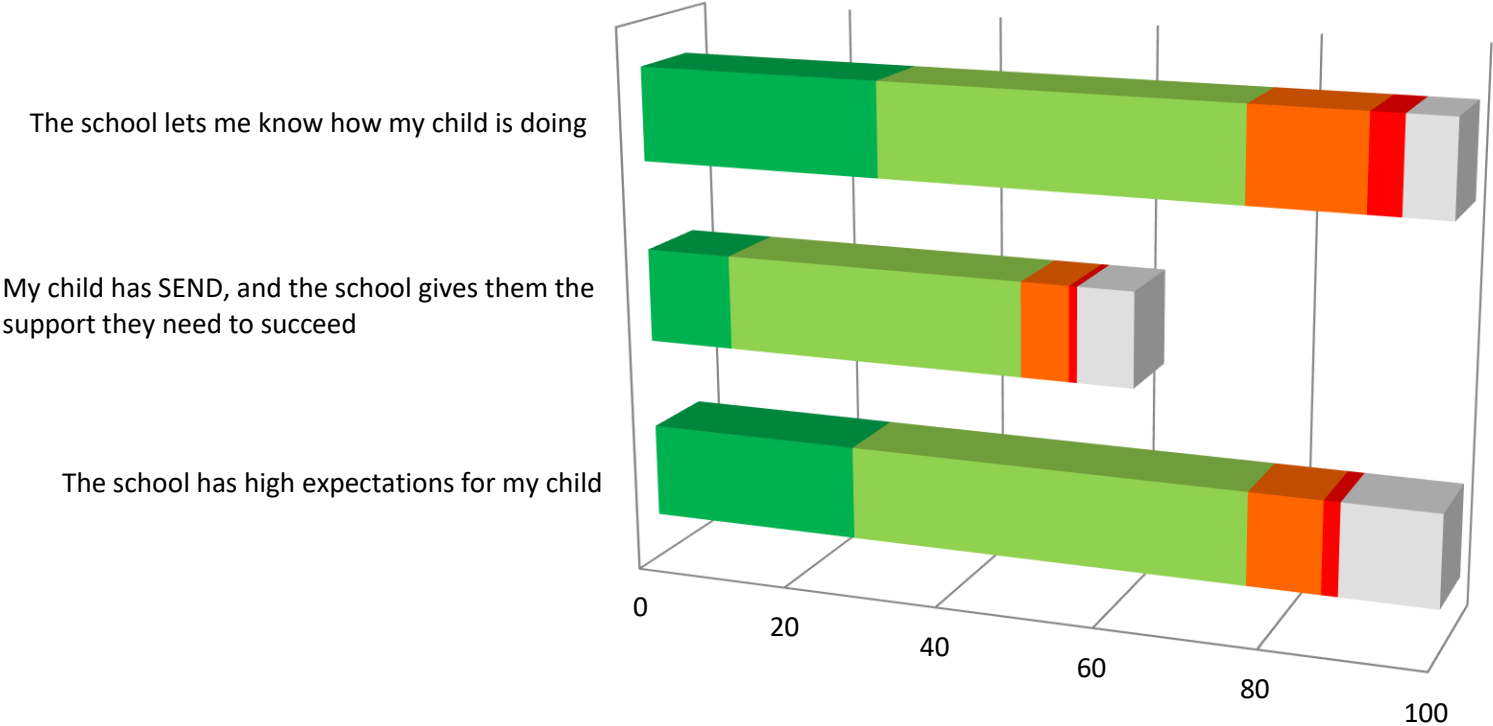
There are high standards of behaviour in this school

The school responds well to any concerns I raise



	The school responds well to any concerns I raise	There are high standards of behaviour in this school	My child gets appropriate homework/pre-learning tasks in this school
■ Strongly Agree	17	28	26
■ Agree	32	53	56
■ Disagree	13	9	11
■ Strongly Disagree	4	2	2
■ Don't Know	9	8	7

# Parental survey results



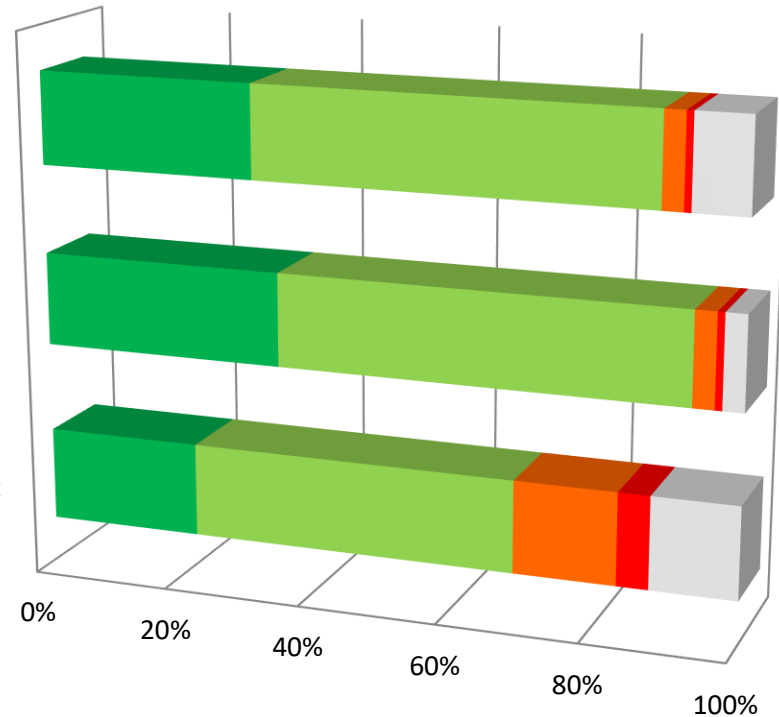
	The school has high expectations for my child	My child has SEND, and the school gives them the support they need to succeed	The school lets me know how my child is doing
Strongly agree	27	11	31
agree	50	38	45
Disagree	9	6	14
Strongly disagree	2	1	4
Don't know	12	7	6

## Parental survey results

There is a good range of subjects available to my child at this school

My child can take part in clubs and activities at this school

The school supports my child's wider personal development



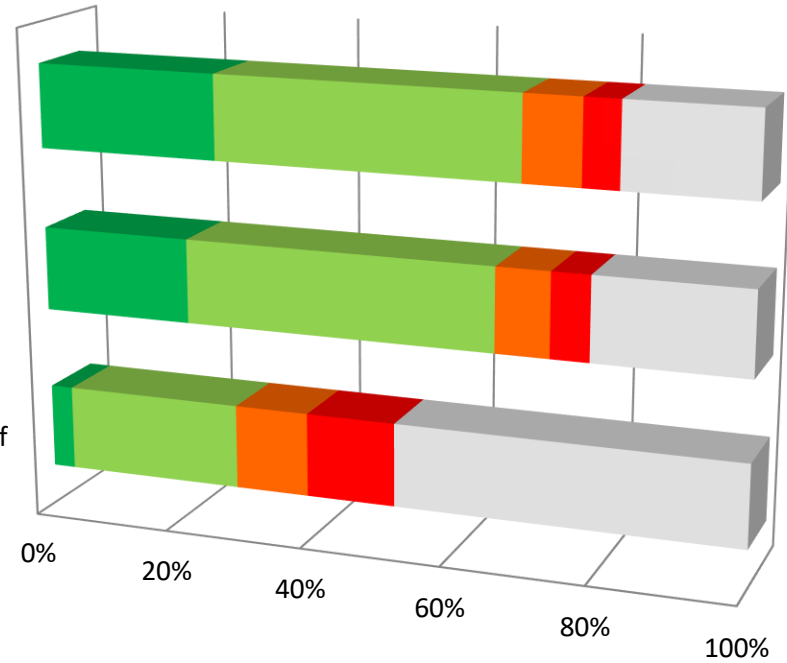
	The school supports my child's wider personal development	My child can take part in clubs and activities at this school	There is a good range of subjects available to my child at this school
Strongly agree	20	35	32
Agree	42	58	58
Disagree	13	3	3
Strongly disagree	4	1	1
Don't know	11	3	8

## Parental survey results

I know who to contact in school if I am worried about my child's mental health and well being

The mental health and wellbeing of my child are supported by the school

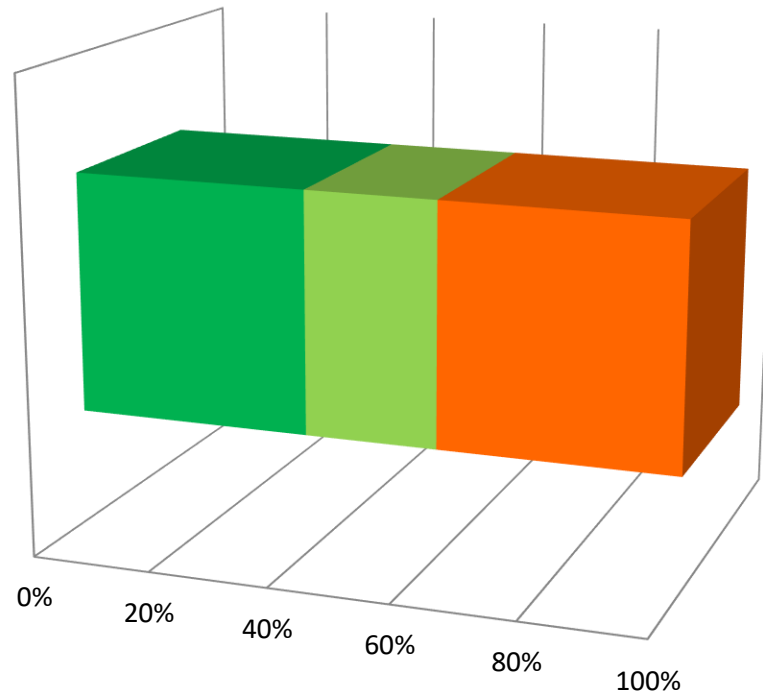
The school/sixthform helps me to understand the different pathways available for my child at the end of key stage 4 (year 11)



	The school/sixthform helps me to understand the different pathways available for my child at the end of key stage 4 (year 11)	The mental health and wellbeing of my child are supported by the school	I know who to contact in school if I am worried about my child's mental health and well being
■ Strongly agree	3	20	26
■ Agree	24	41	43
■ Disagree	10	7	8
■ Strongly disagree	12	5	5
■ Don't know	46	20	18

## Parental survey results

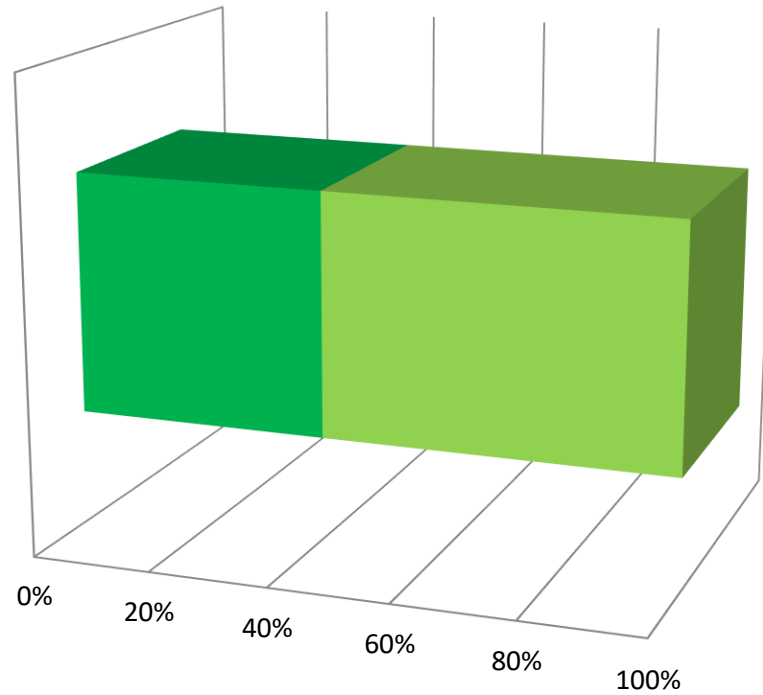
What time suits you best to hold any careers related events for your child?



What time suits you best to hold any careers related events for your child?	
■ 9am-11am	34
■ 3pm-5pm	19
■ 4pm-6pm	34

## Parental survey results

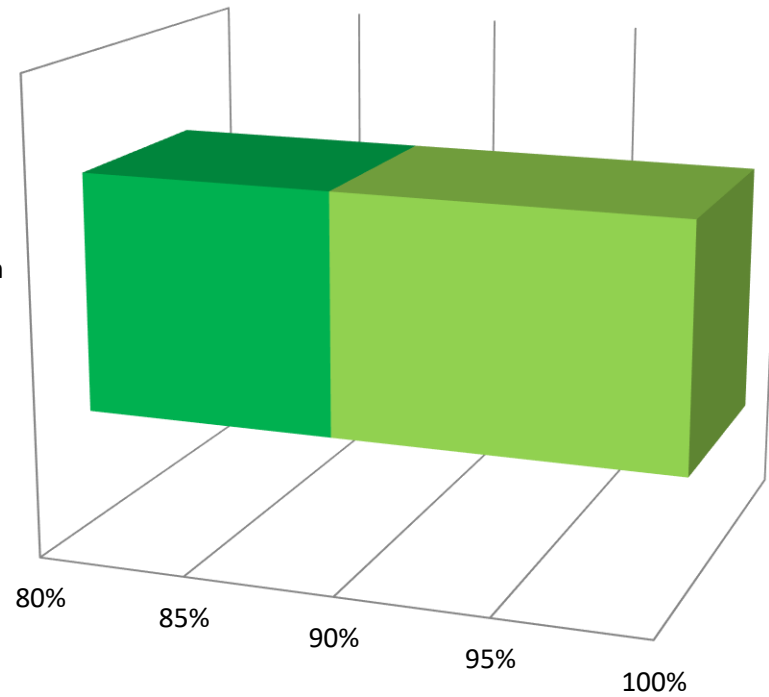
I know who to contact for support and information around careers provision for my child



I know who to contact for support and information around careers provision for my child	
■ Yes	44
■ No	61

## Parental survey results

Would you welcome an evening for your child to meet with various organisations from employment, training, higher/further education and apprenticeships in order to learn more about careers?



Would you welcome an evening for your child to meet with various organisations from employment, training, higher/further education and apprenticeships in order to learn more about careers?

■ Yes	23
■ No	3